







All of our newly imagined 3, 4 and 5BR ski in/ ski out townhomes will be fully furnished, and will include gourmet kitchens, quartz counters, oak hardwood floors, high end appliances, spacious family living and dining spaces, a gas fireplace, one (and sometimes two) master suites, second floor laundry rooms, programmable HVAC systems, bunk rooms, indoor parking, and direct entry from outside.

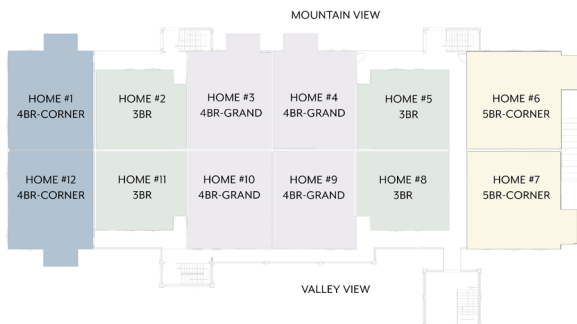
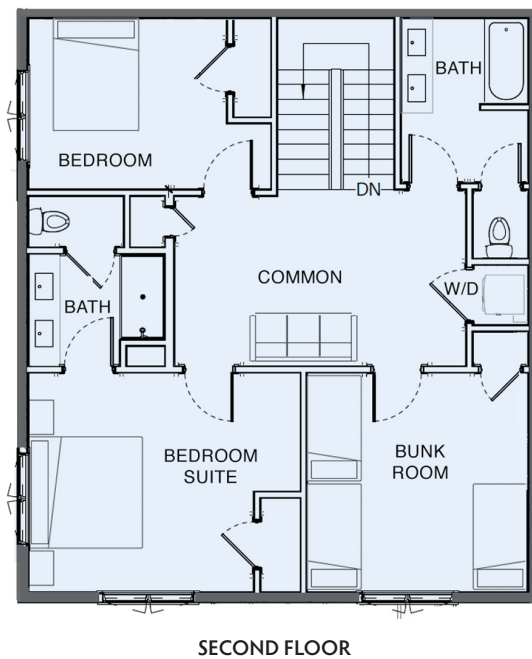
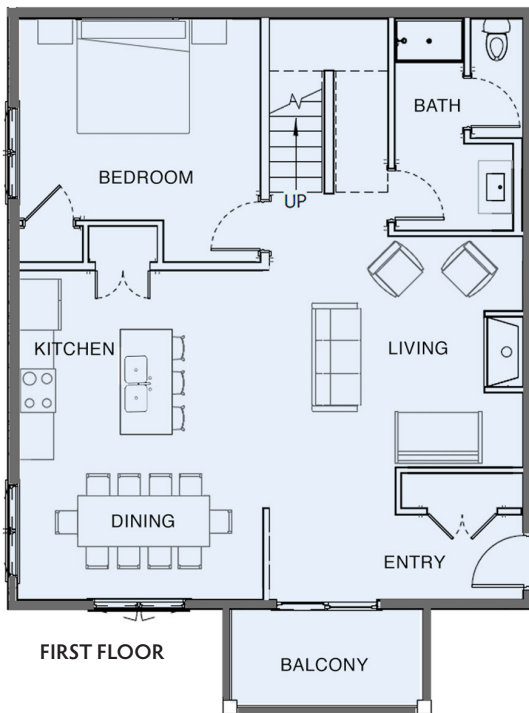


## BLUE SPRUCE FLOOR PLAN: 4BR-CORNER TOWNHOME

Walk into these beautiful corner homes, and you'll be welcomed by sunlight streaming in on open living spaces designed for relaxed living. The living, dining, and gourmet kitchen areas can comfortably accommodate a dozen or more family or friends in understated country elegance. There's also a full bedroom and bath on this floor.

The second floor includes a beautiful master suite, two additional spacious bedrooms or bunk rooms, and a common space that's the perfect area for work...or for additional play!

					
<b>1,884</b>	<b>12+</b>	<b>1</b>	<b>4</b>	<b>3</b>	<b>3</b>
SQ. FT	SLEEPS	SUITES	BEDROOMS	BATHS	INDOOR PARKING SPACES



### AVAILABILITY

Only two 4BR corner townhomes will be available for sale during this development phase.

Choose a mountain or valley view.



**JOIN OUR PRIORITY SALES LIST**  
southfacevillage.com • 844-276-4204