







All of our newly imagined 3, 4 and 5BR ski in/ ski out townhomes will be fully furnished, and will include gourmet kitchens, quartz counters, oak hardwood floors, high end appliances, spacious family living and dining spaces, a gas fireplace, one (and sometimes two) master suites, second floor laundry rooms, programmable HVAC systems, bunk rooms, indoor parking, and direct entry from outside.

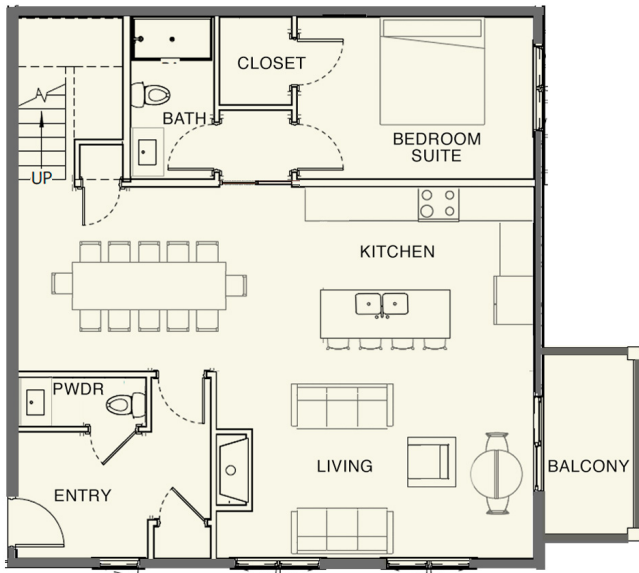


BLUE SPRUCE FLOOR PLAN: 5BR-CORNER TOWNHOME

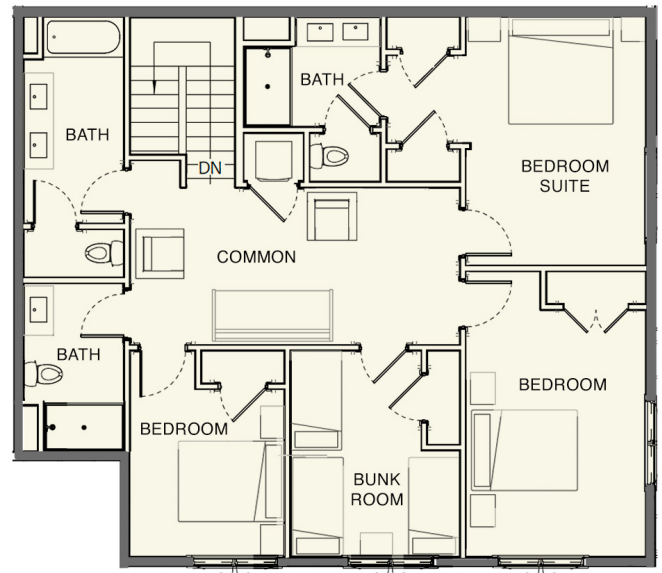
Five full bedrooms, including two master suites, 4 ½ baths, living spaces galore, a balcony, even three indoor parking spaces. Unheard of in a townhome until now. Step into a spacious foyer and boot room, and from there into a light filled world of family memories. Kitchen, dining and living spaces are all open, one to the other, with seating for 16 at dinner time. One of the two bedroom suites and an additional powder room are also on this floor. Come upstairs to a second master suite, three more spacious bedrooms or bunk rooms, and a common space for work or additional play!

No detail has been overlooked in this magnificent slopeside residence. It will forever welcome you, your extended family, and your friends.

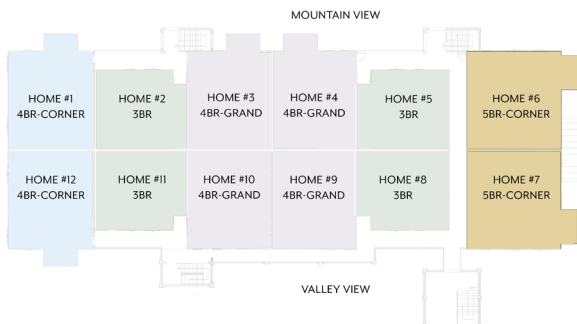
					
2,331	16+	2	5	4 ½	3
SQ. FT	SLEEPS	SUITES	BEDROOMS	BATHS	INDOOR PARKING SPACES



FIRST FLOOR



SECOND FLOOR



AVAILABILITY

Only two 5BR townhomes will be available for sale during this development phase

Choose a mountain or valley view.



JOIN OUR PRIORITY SALES LIST
southfacevillage.com • 844-276-4204