



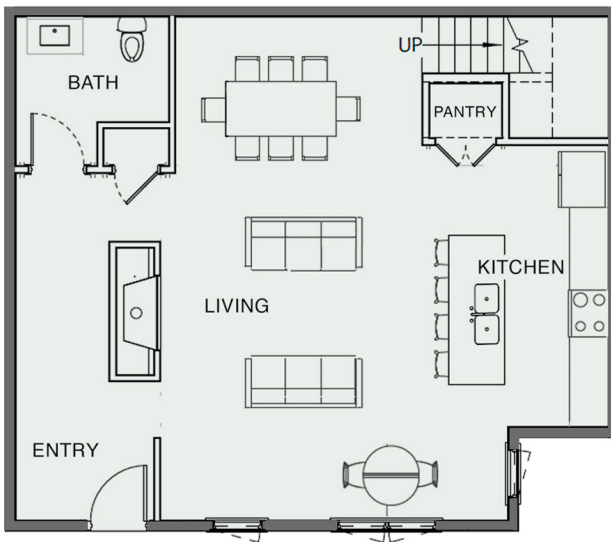
All of our newly imagined 3, 4 and 5BR ski in/ ski out townhomes will be fully furnished, and will include gourmet kitchens, quartz counters, oak hardwood floors, high end appliances, spacious family living and dining spaces, a gas fireplace, one (and sometimes two) bedroom suites, second floor laundry rooms, programmable HVAC systems, bunk rooms, indoor parking, and direct entry from outside.

BLUE SPRUCE FLOOR PLAN - 3BR TOWNHOME

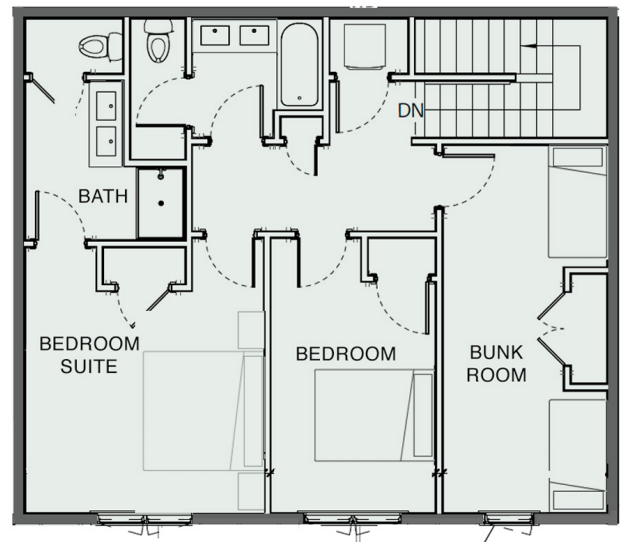
These wonderfully livable 3BR townhomes have been designed with your family in mind. Turn the key and step into a spacious foyer, and from there into a first floor living area that includes open gourmet kitchen, dining and living spaces, sit-down dining options for at least 12 of your family and friends, and a powder room.

The second floor includes a master suite, two additional bedrooms or bunkrooms, and two full baths.

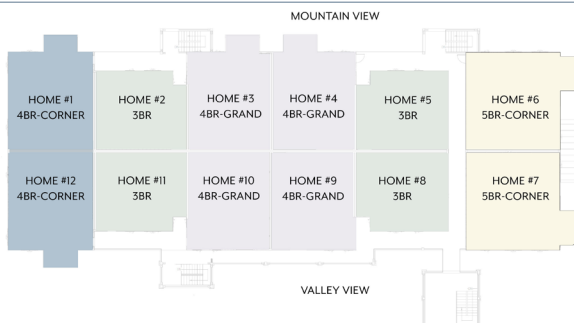
1,690	10+	1	3	2 ½	2
SQ. FT	SLEEPS	SUITES	BEDROOMS	BATHS	INDOOR PARKING SPACES



FIRST FLOOR



SECOND FLOOR



AVAILABILITY

Only four 3BR townhomes will be available for sale during this development phase.

Choose a mountain or valley view.



JOIN OUR PRIORITY SALES LIST
southfacevillage.com • 844-276-4204